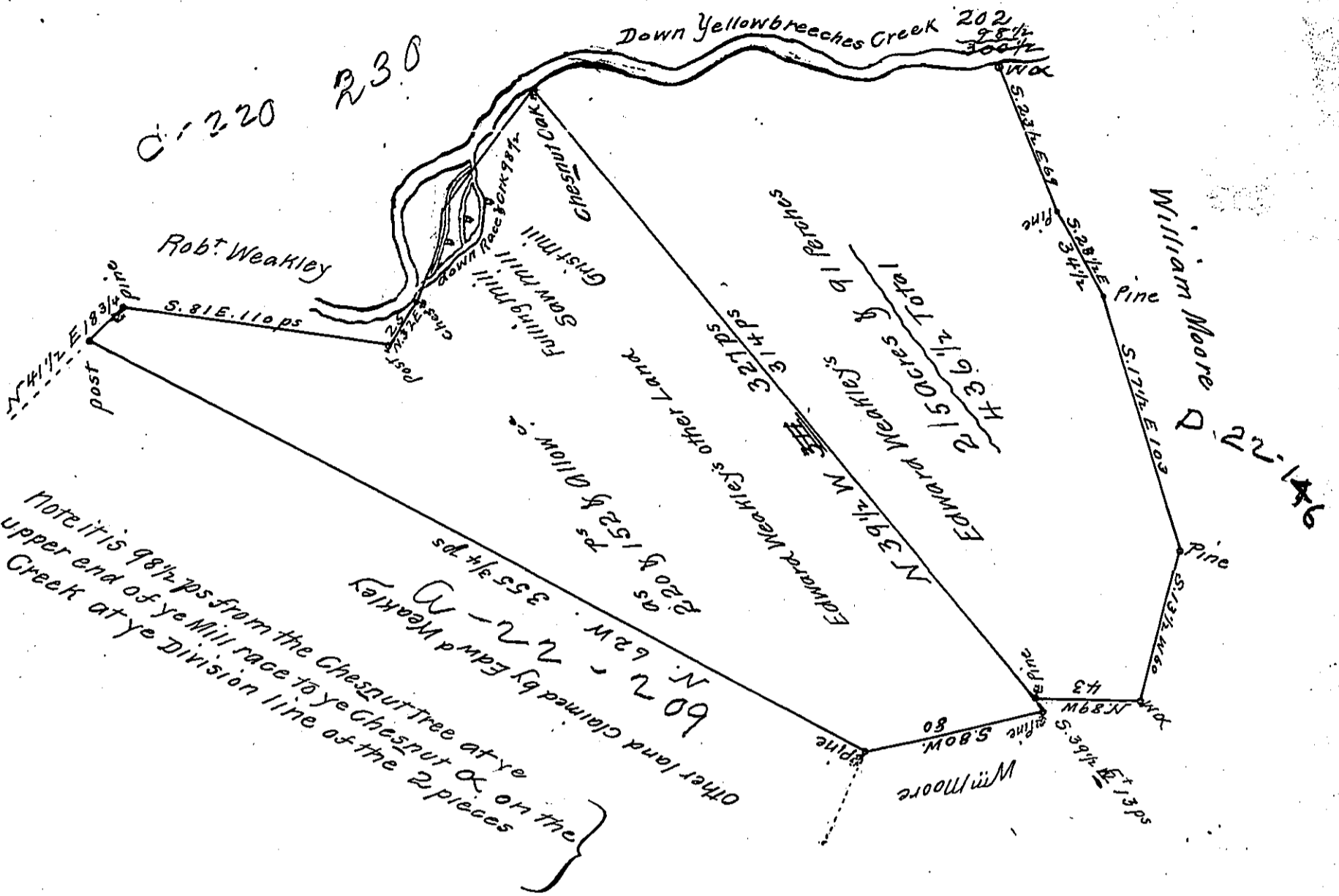


C 209 - 256

James Weakley



The Draught of a Tract of Land Situate on Yellowbreeches Creek partly in West pennis borough and part in Middleton Township in Cumberland County Containing Two Hundred & fifteen Acres & 91 Perches and the Allowance of Six pr Cent for Roads & C. Surveyd to Edward Weakley the 26th day of April 1786 In Pursuance of a Warrant from the Supreme Executive Council of the Commonwealth of Pennsylvania Bearing Date at Philadelphia the 10th day of April 1786.

p Saml Lyon D.S.

John Lukens Esq' Surj Genl

17^s 369

IN TESTIMONY that the above is a copy of the original remaining on file in the Department of Internal Affairs of Pennsylvania, made conformably to an Act of Assembly approved the 16th day of February, 1833, I have hereunto set my Hand and caused the Seal of said Department to be affixed at Harrisburg, this Twenty Sixth day of May 1910

Henry Howard
Secretary of Internal Affairs.